

18

STOREYS  
TOWER



MARIYAM  
HERITAGE

Waliv, Vasai (E)

FULL CC RECEIVED!

PROJECT BY



FRAGRANCE OF  
**ROYALTY**



Welcome to the

# MOUNTAIN VIEW APARTMENT

at Waliv, Vasai (E)

---

If the fragrance of wet mud,  
mellow chirping of the birds,  
clear skies and serene environs  
exhilarate you then,

**Mariyam Heritage  
is your destination.**



FRAGRANCE OF  
**LUXURY**







MahaRERA No.  
**P99000025618**







# SKY AMENITIES APARTMENT







BIG TRACK





# MULTIPURPOSE GAME COURT

— INCLUDING —

(Basket Ball, Tennis, Badminton & Cricket)



# Providing Best Amenities to You and Your Family!



Kids Play Area



Senior Citizen Area



Jogging Track



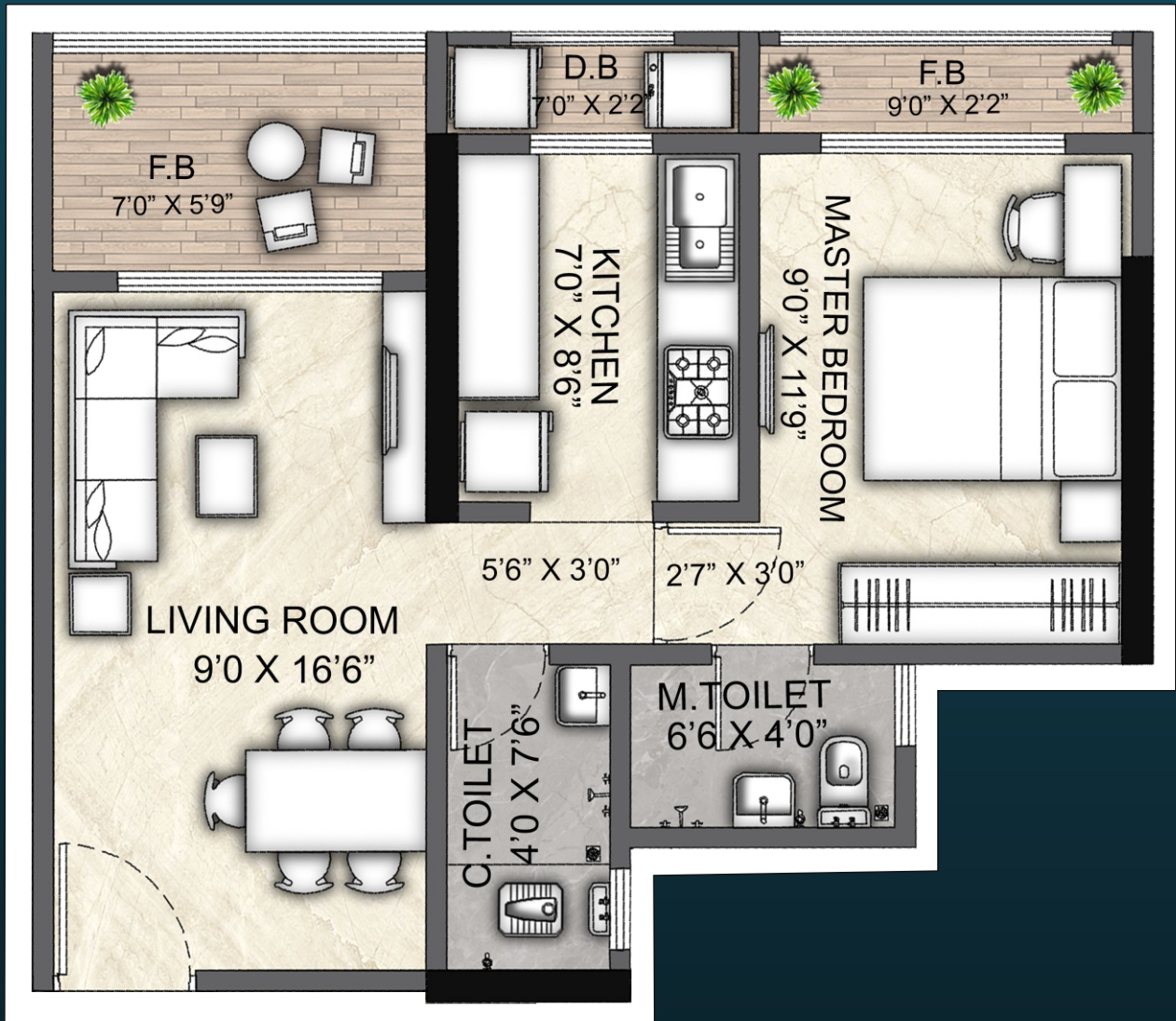
Relaxable Seating Area



Gazebo Seating



Open Air Gym



# 1 BHK



**1BHK - 430 sq. ft + 93 sq. ft  
(RERA Carpet)**





# 2 BHK



**2BHK - 579 sq. ft + 103 sq. ft  
(RERA Carpet)**





LIVING ROOM



BEDROOM



KITCHEN



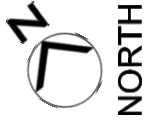
SHOW  
**FLAT** READY  
EXPERIENCE YOUR  
LIFESPACE



LUXURIOUS  
ENTRANCE  
LOBBY





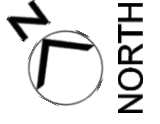


NORTH

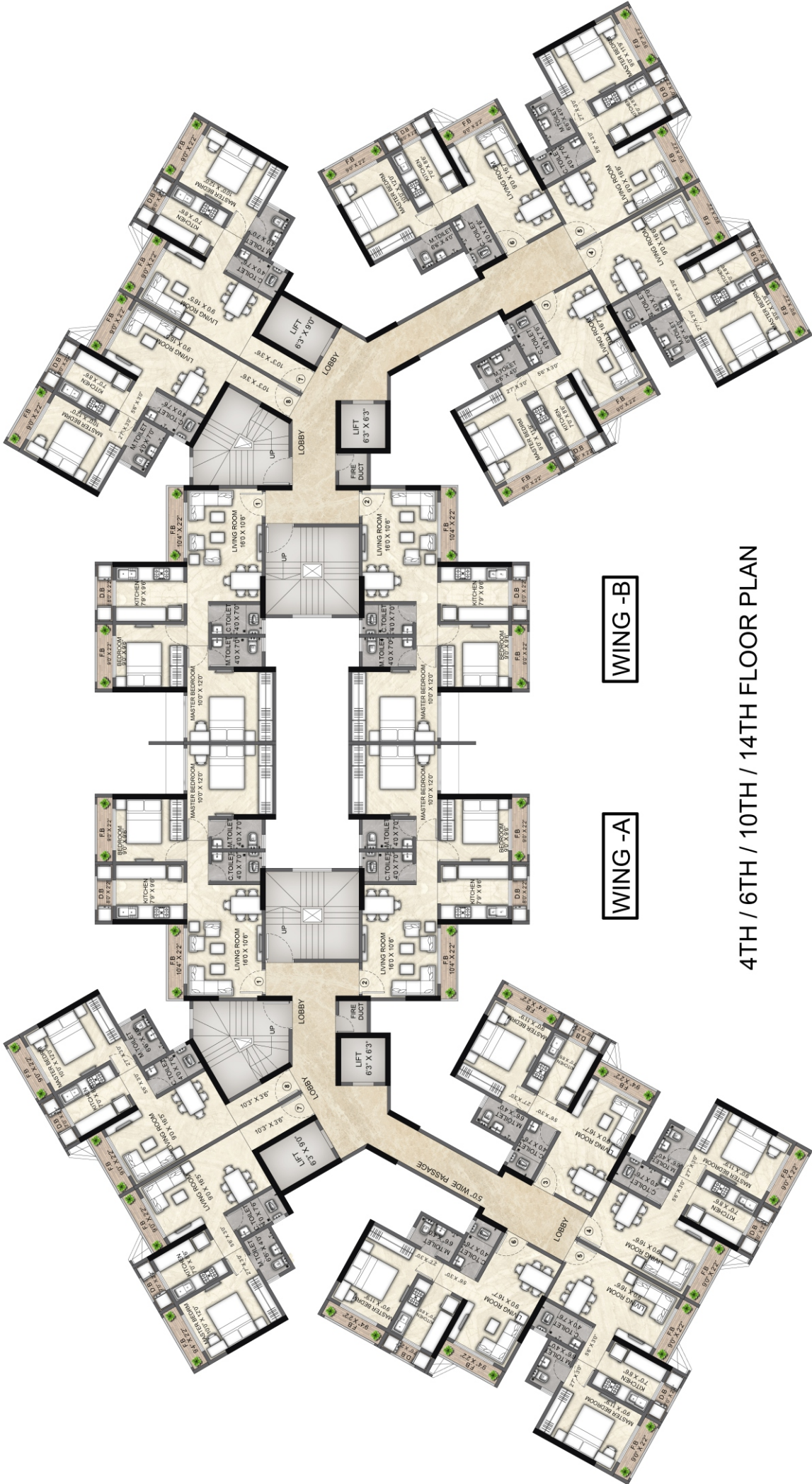


# LAYOUT PLAN





NORTH

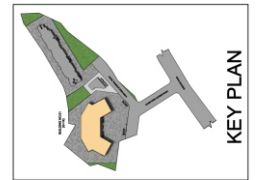


WING-B

WING-A

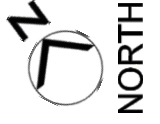
4TH / 6TH / 10TH / 14TH FLOOR PLAN

# FLOOR PLAN

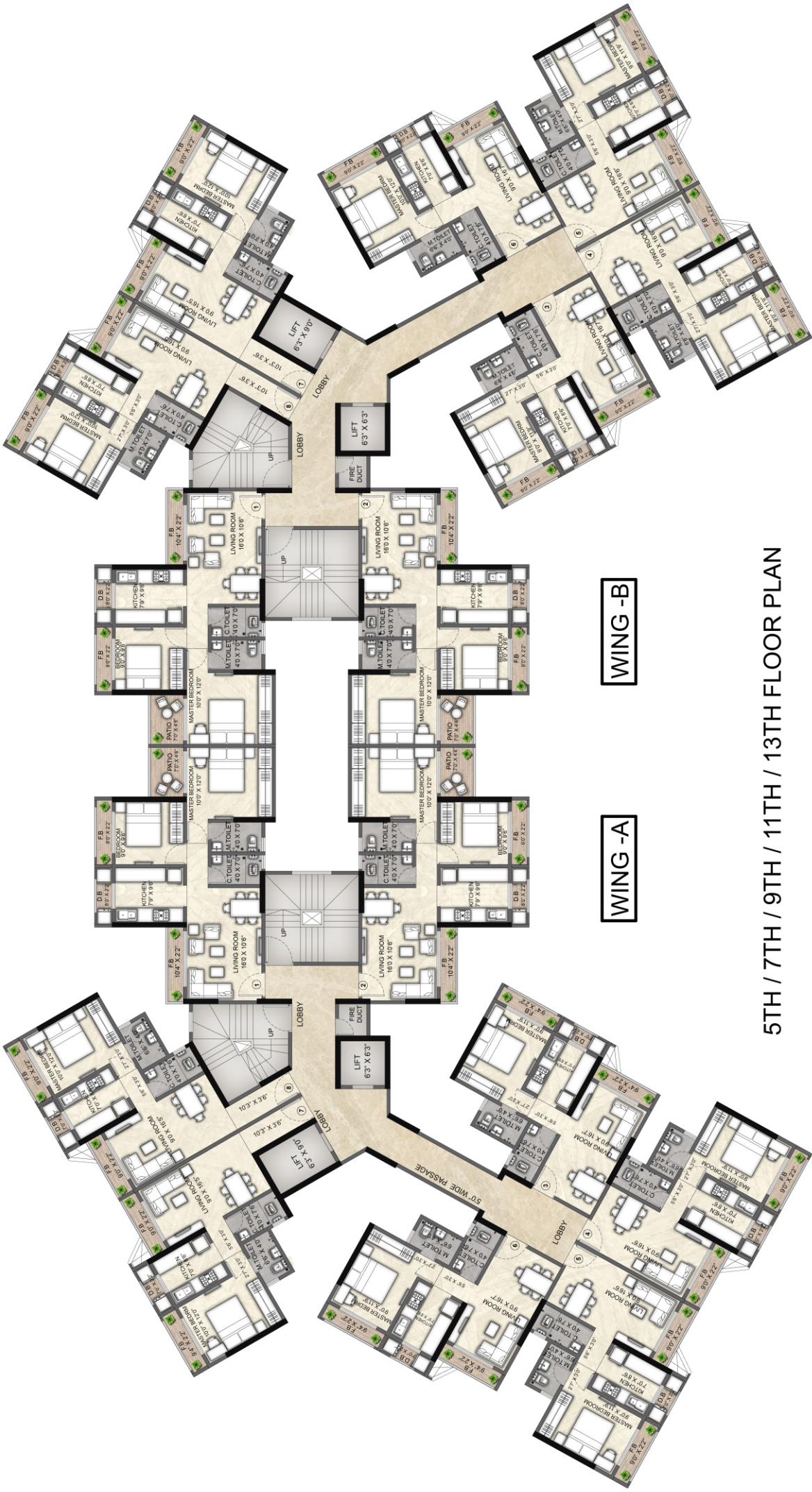


KEY PLAN





NORTH

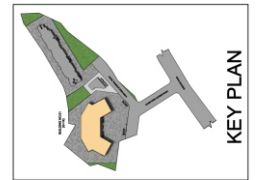


WING-B

WING-A

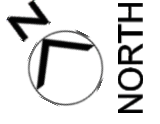
5TH / 7TH / 9TH / 11TH / 13TH FLOOR PLAN

FLOOR PLAN

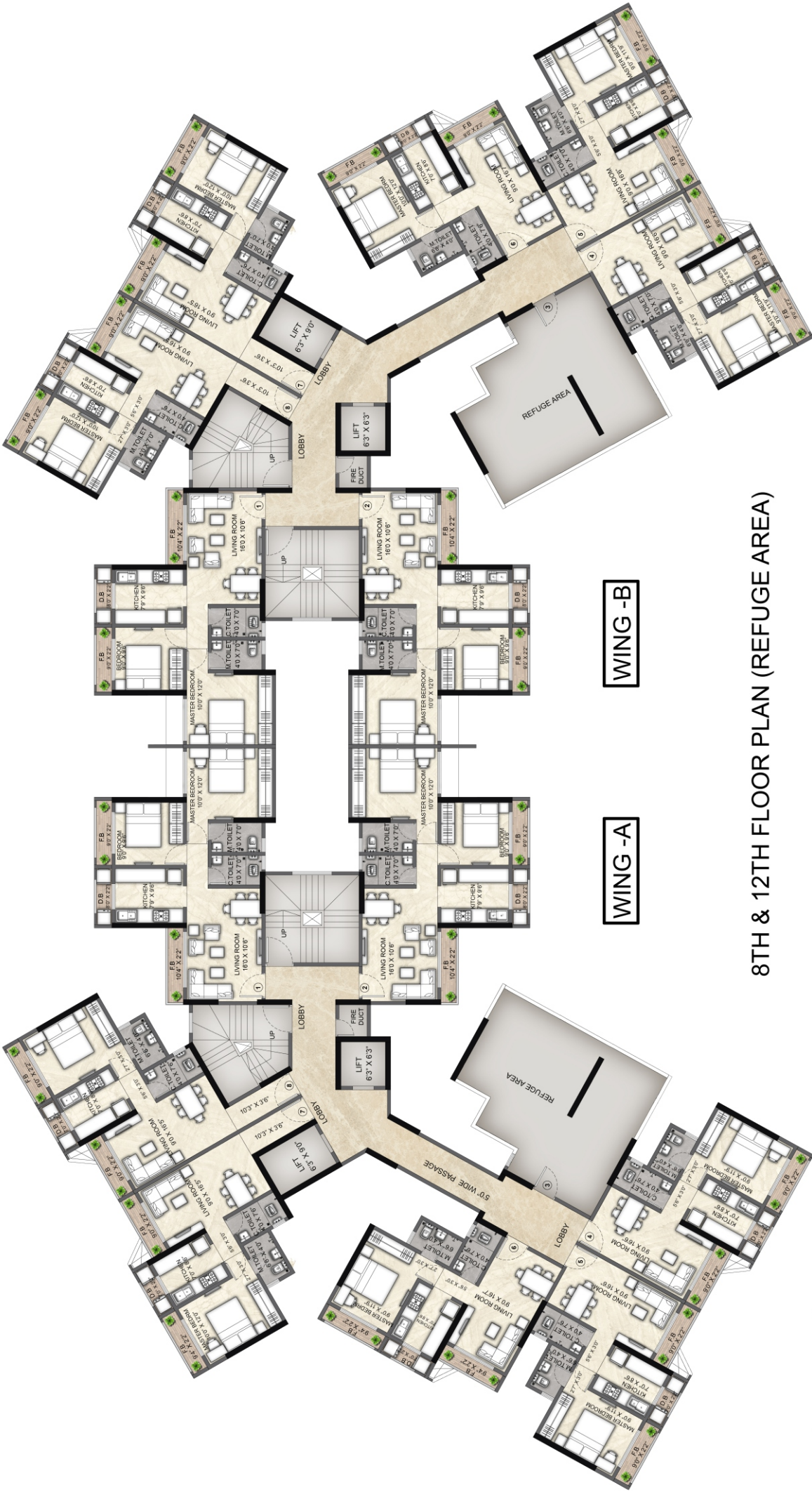


KEY PLAN





NORTH

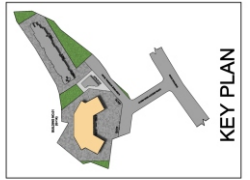


8TH & 12TH FLOOR PLAN (REFUGE AREA)

WING-B

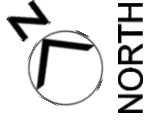
WING-A

# FLOOR PLAN

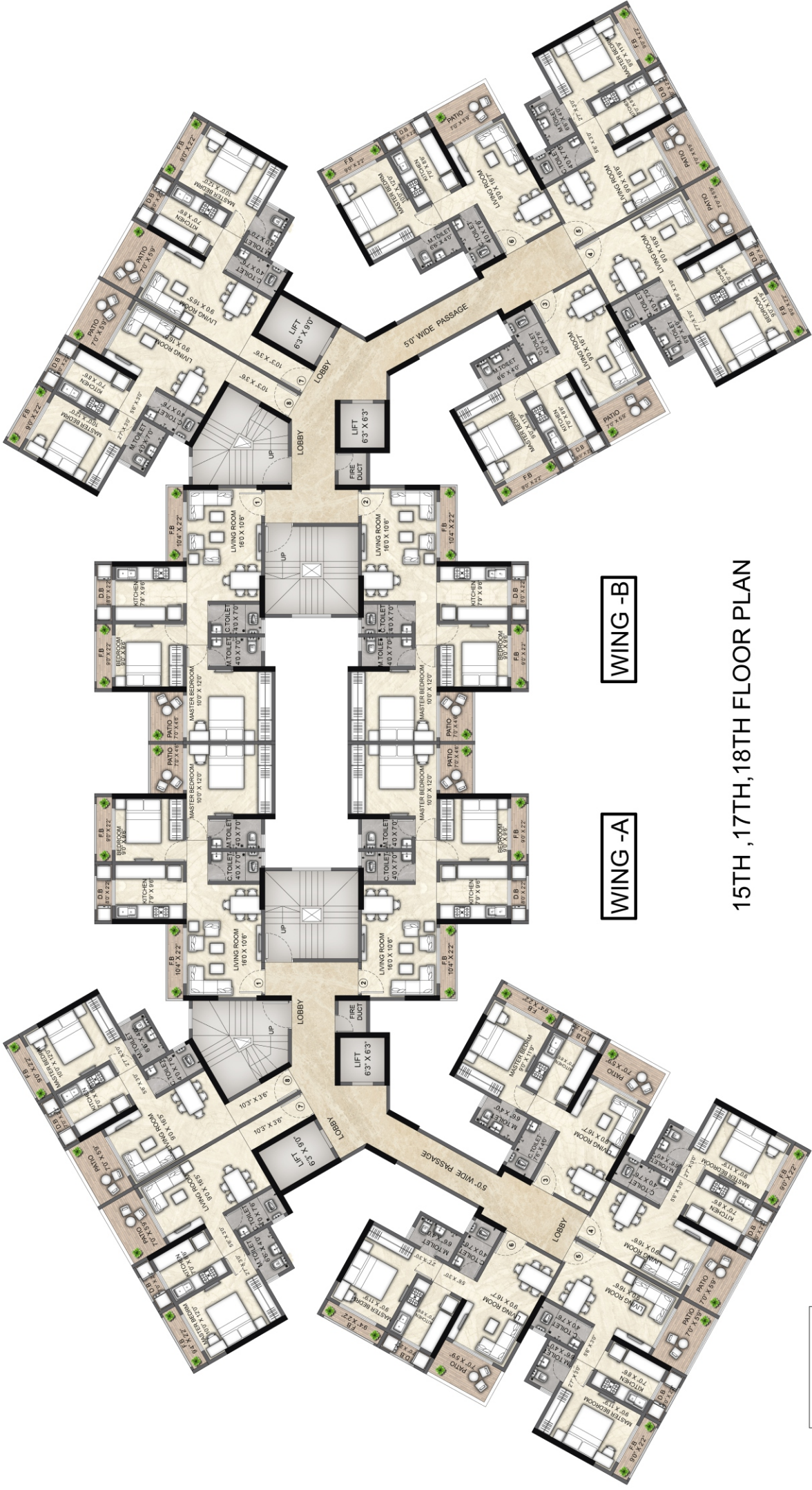


KEY PLAN





NORTH

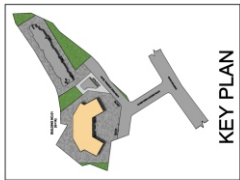


WING-B

WING-A

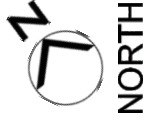
15TH, 17TH, 18TH FLOOR PLAN

# FLOOR PLAN

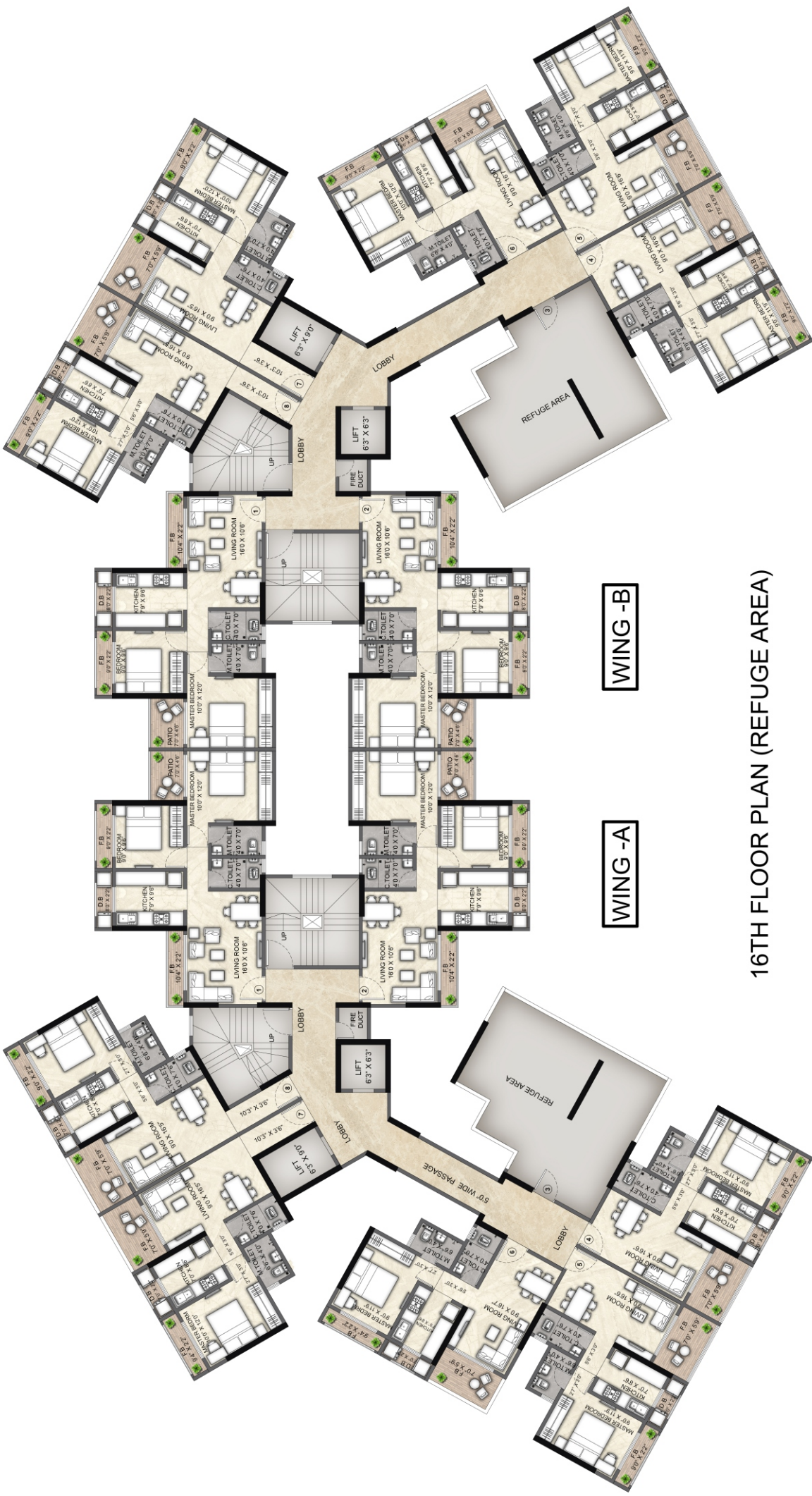


KEY PLAN





NORTH

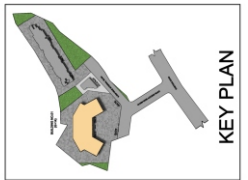


WING - B

WING - A

16TH FLOOR PLAN (REFUGE AREA)

# FLOOR PLAN



KEY PLAN



## Strategic Location & Easy Accessibility



**Hospitals :**  
Under 1km



**Schools :**  
Under 600m



**Banks :**  
Under 600m



**Entertainment :**  
Under 4.2km



**Restaurants :**  
Under 300m

Consultant Architect : **ATMIYA**

Legal Advisor : **Advocate Bharat Bhoir, Vasai (East)**

Liasoning Architect : **EN CON, Vasai (West)**

RCC Consultant : **FRAME Bandra (West)**

For More Details Call Now : **+91 9055666111**

[www.mariyamheritage.com](http://www.mariyamheritage.com) | [info@mariyamheritage.com](mailto:info@mariyamheritage.com)

**Head Office : Sagar Developer**  
Pathanwadi, Malad (E),  
Mumbai, MH 400097

**Site Office : Saniya City,**  
Behind Shalimar Inn Hotel,  
Waliv, Vasai (E), MH 401208

Note : Specifications and amenities mentioned in this brochure are only representational and informative information, images and visuals, drawings plans or sketches shown in this brochure are only an architects impression and are only indicative of the envisaged developments and the same are Subject to the approval of local authorities. The developers reserve the right to alter the layout, plans, specifications or features without prior notice or obligation.



Scan for Google Map Direction